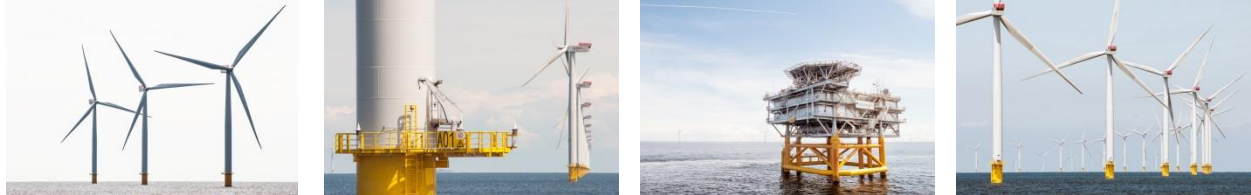
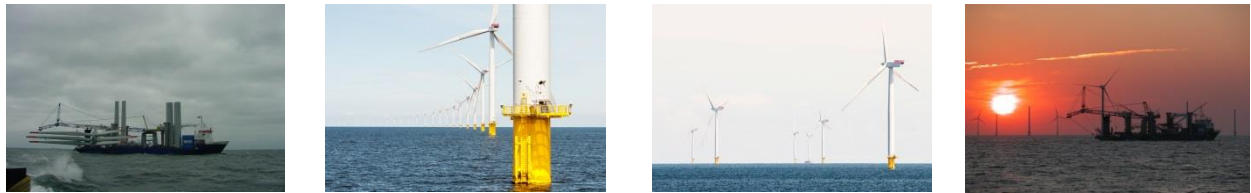


# Invitation

**“Gå-hjem” meeting about global wind energy shipping and logistics  
September 2, 2014 at 16:00 pm in Esbjerg**



The offshore wind farms are getting bigger in size, they are moving further away from shore, and they are constructed in deeper and deeper waters using wind turbines each with an ever increasing wind power capacity. As both CapEx investments and OpEx costs increase as a result, focus on overall wind farm project risks, complexities, and quality take on a much more prominent role prompting the need for a debate on the role of small- to medium sized enterprises within offshore wind now and in the future. This topic deserves additional attention and you are hereby invited to the second in a series of 7 “gå-hjem” meetings over the coming years where the vantage point of the discussions will be shipping and logistics.



**Organizers:** offshoreenergy.dk and Aalborg University Copenhagen  
**Venue:** Blue Water Shipping, Trafikhavnskaj 9, 6701 Esbjerg, Denmark  
**Timing:** Tuesday, September 2, 2014 at 16:00 – 17:30 pm

**Agenda:**

1. Opening and welcome by offshoreenergy.dk
2. The offshore wind future for small to medium sized enterprises by Blue Water Shipping
3. Global shipping / logistics business model review from Aalborg University research
4. Panel discussion about the role of small to medium sized enterprises in offshore wind
5. Questions about wind shipping and logistics from the audience to the expert panel

**Expert panel:**



**Participation:** Free-of-charge, first-come-first-serve (maximum capacity: 100 people)  
**Registration:** Please register by sending an e-mail to [lh@offshoreenergy.dk](mailto:lh@offshoreenergy.dk) in English with name, company name, and phone number

